

# Grant Application



Skyler Vold

**Email :** Skyler.T.Vold@odfw.oregon.gov

**Application ID :** A14VS50

**Custom Ref. -**

**Application Start Date:** 2021-10-22 22:42:01

**Application Completed Date:** 2021-10-22 23:32:34

1 Have you ever applied for an OWF grant before?

yes

1.1 What was the name of the project?

Southeast Oregon Sage-Grouse Adopt-a-Lek Program 2021

2 Have you ever been denied for an OWF grant before?

no

3 Project Title

SE Oregon Sage-Grouse Adopt-a-Lek Program 2022

4 Name of my Organization

Oregon Department of Fish and Wildlife

5 If your organization is not a tax-exempt nonprofit, please list the name of your fiscal sponsor

-

If this does not apply to you, write N/A

N/A

6 Project Manager Full Name

Skyler Vold

7 Project Manager Mailing Address

-

Please enter full address with city, state & zip

237 Hwy 20 S, PO Box 8, Hines, OR 97738

8	Project Manager Phone Number
	541-589-4297
9	Project Manager Email Address
	Skyler.T.Vold@odfw.oregon.gov
10	Please provide a brief biographical statement about yourself
	ODFW Sage-Grouse Conservation Coordinator, 8 years experience with research and management of wildlife species of conservation concern.
11	Provide any social media handles you use - Enter social handles or URLs such as instagram, facebook, twitter, youtube, etc. so that we can use to cross promote on our channels - if you do not have any, please place N/A
	N/A
12	Please indicate if you are currently following Oregon Wildlife Foundation on our social media channels
	- None of these channels
13	Total estimated project cost
	108738
14	Funding that you are requesting from OWF - If you're request is for more than \$5,000, please contact Tim Greseth - <a href="mailto:tim@myowf.org">tim@myowf.org</a> before submitting your application.
	10000
15	What type of project are your proposing?
	Wildlife
16	Will your project address an Oregon Conservation Strategy habitat or species?
	yes
16.1	What habitat or species is addressed?
	Greater Sage-Grouse
17	Start date of project- Day/Month/Year
	14-02-2022

18	End date of project
	10-06-2022
19	Location of project
	Southern Malheur County, Oregon
20	Has a local, state or federal biologist reviewed this project?
	yes
20.1	What is their name and contact info?
	Lee Foster, Hines Assistant District Biologist, 541-573-6582
21	Have you already or will you obtain necessary permits from all requisite agencies as applicable to proposed project?
	yes
22	What will the requested funds be used for?
	Wages for a dedicated Adopt-a-lek Volunteer Coordinator for ODFW's Adopt-a-Lek program.
23	Provide a brief Project Summary

Since 2006, Oregon Department of Fish and Wildlife's Adopt-a-Lek program has been instrumental in completing greater sage-grouse lek attendance surveys in remote areas of southeastern Oregon. Now entering its 17th year, about 50 trained volunteers continue to monitor approximately 70 leks each spring. Data collected by Adopt-a-Lek volunteers are entered into ODFW's long-term sage-grouse database and are used to help evaluate annual population trends. As such, this volunteer contribution is necessary for the on-going monitoring and conservation of sage-grouse in Oregon. Adopt-a-Lek volunteers supplement surveys conducted by federal and state agency biologists, among other partner biologists, and have been especially important to fill in data gaps, particularly in sage-grouse core areas that are located in rugged, isolated regions of southeastern Oregon. The Adopt-a-Lek program has been made possible for 17 years with funding assistance from Oregon Wildlife Foundation, Bureau of Land Management (BLM), US Fish and Wildlife Service (FWS), ODFW's upland game bird validations (stamps), as well as in-kind contributions from volunteers and ODFW. In 2022, the Adopt-a-Lek program will continue its contribution to the estimation of PAC level population trends, as well as increase volunteer recruitment and training.

24 Upload pre-project pictures or a video -  
By submitting these photos or video I warrant that I am the legal owner of this media and grant the Foundation permission to reproduce, exhibit, or publish them for all general purposes in relation to Oregon Wildlife Foundation's work. If you have questions about photo or video submissions please refer to [myowf.org/grants](http://myowf.org/grants) for guidance.

□

□

□

□

□

25 Fill out the budget

26 Upload your Project Narrative -  
Please make sure your narrative is no more than 7 pages long, single spaced, 12 pt. font (Calibri preferred).

1 Document Uploaded

27 Upload letters of support

2 Documents Uploaded

28 I understand that I am required to submit a Project Completion Report, copies of any publications or social media posts crediting the Foundation's support, and post-project pictures at the completion of my project

yes

Powered by **Submit.com**

— Grant Application

Skyler Vold

Application ID: **A14VS50**

1 Are the eligible?

Yes

<b>Project Revenue</b>	<b>Cash</b>	<b>In-Kind</b>	<b>Committed / Pending</b>
<b>Oregon Wildlife Foundation Request</b>	10000		Pending
Oregon Department of Fish and Wildlife		12435	Committed
Volunteer contributions		81503	Committed
BLM Cooperative Agreement	4800		Committed
<b>REVENUE</b>	<b>14800.00</b>	<b>93938.00</b>	
		<b>TOTAL PROJECT SUPPORT</b>	<b>108738.00</b>
<b>Project Expenses</b>	<b>Cash</b>	<b>In-Kind</b>	<b>Total</b>
Volunteer Coordinator Wages (figured at \$20/hour for 500 hours)	10000		<b>10000.00</b>
Volunteer time (figured at 50 volunteers, #43.83/hour for 35 hours each)		76703	<b>76703.00</b>
ODFW Salary (5 biologists, average 50 hours each, figured at \$49.74/hr)		12435	<b>12435.00</b>
Volunteer camping donation (figured at 25 volunteers, 3 days each)		1875	<b>1875.00</b>
Volunteer camping claimed (figured at 25 volunteers, 3 days each)	1875		<b>1875.00</b>
Volunteer mileage donation (figured at 25 volunteers, 650 miles each)		2925	<b>2925.00</b>
Volunteer mileage claimed (figured at 25 volunteers, 650 miles each)	2925		<b>2925.00</b>
			<b>0.00</b>
			<b>0.00</b>
			<b>0.00</b>
			<b>0.00</b>
			<b>0.00</b>
			<b>0.00</b>
			<b>0.00</b>
			<b>0.00</b>
		<b>TOTAL PROJECT EXPENSES</b>	<b>108738.00</b>
<b>Balanced budget? This cell should read "0" ----&gt;</b>		<b>NET</b>	<b>0.00</b>

## **Oregon Wildlife Foundation Grant Application – Supplemental Materials – ODFW Southeast Oregon Sage-Grouse Adopt-a-Lek Program 2022**

### **Project Abstract/Summary**

Since 2006, Oregon Department of Fish and Wildlife's Adopt-a-Lek program has been instrumental in completing greater sage-grouse lek attendance surveys in remote areas of southeastern Oregon. Now entering its 17<sup>th</sup> year, about 50 trained volunteers continue to monitor approximately 70 leks each spring. Data collected by Adopt-a-Lek volunteers are entered into ODFW's long-term sage-grouse database and are used to help evaluate annual population trends. As such, this volunteer contribution is necessary for the on-going monitoring and conservation of sage-grouse in Oregon. Adopt-a-Lek volunteers supplement surveys conducted by federal and state agency biologists, among other partner biologists, and have been especially important to fill in data gaps, particularly in sage-grouse core areas that are located in rugged, isolated regions of southeastern Oregon. The Adopt-a-Lek program has been made possible for 17 years with funding assistance from Oregon Wildlife Foundation, Bureau of Land Management (BLM), US Fish and Wildlife Service (FWS), ODFW's upland game bird validations (stamps), as well as in-kind contributions from volunteers and ODFW. In 2022, the Adopt-a-Lek program will continue its contribution to the estimation of PAC level population trends, as well as increase volunteer recruitment and training.

**Biologist Support Statement (Skyler Vold, ODFW Sage-Grouse Conservation Coordinator, below. Please see attached letters of support from Paul Henson, USFWS, and Lee Folliard, BLM).**

*Oregon's Comprehensive Conservation Strategy defines greater sage-grouse as a "strategy species," or a species of greatest conservation need in Oregon. As such, substantial research and habitat management efforts have been dedicated to the conservation of sage-grouse in Oregon. Sage-grouse are also considered an "umbrella species" in sagebrush ecosystems due to their large geographic distribution and seasonal habitat needs, where management actions dedicated to habitat improvements for sage-grouse will also benefit many other sagebrush obligate wildlife species as well (Rowland et al. 2006, Hanser and Knick 2011).*

*Evaluating greater sage-grouse annual population trends in Oregon is a key aspect in the population monitoring objectives set by Oregon's sage-grouse conservation plans (Hagen 2011, SageCon 2015). In Oregon, annual sage-grouse population trends are assessed using the data collected through an intensive spring lek monitoring program (see Hagen 2011). These resulting trends help inform Oregon's sage-grouse management recommendations and are also used by BLM in their evaluation of annual sage-grouse adaptive management triggers (see BLM 2015). The lek monitoring effort relies on collaboration from several entities to conduct surveys annually, including state and federal partners, as well as many dedicated volunteers.*

*The ODFW Adopt-a-Lek (AAL) program provides a significant contribution to Oregon's sage-grouse lek monitoring program and the AAL program would not be possible without a dedicated*



*AAL Volunteer Coordinator. The additional effort AAL provides has helped Oregon exceed its statewide goal of surveying 50% of leks in every Priority Area of Conservation, or PAC, in the state annually. As a result, the program has also contributed to improving the accuracy of sage-grouse population trends and estimates in Oregon. Ultimately, AAL volunteers are necessary to help meet population monitoring objectives defined in multiple Oregon sage-grouse conservation action plans and the efforts described in this project proposal will benefit sage-grouse conservation in the short- and long-term.*

## **Project Narrative**

Oregon's Adopt-a-Lek program started in 2006 as a pilot project, with the goal of utilizing dedicated volunteers to monitor sage-grouse populations in southeastern Oregon. Since its initiation, the program has successfully trained citizens (over 125 individuals) as field technicians to collect important biological data and help monitor the status of sage-grouse populations in areas of southeastern Oregon that are not currently surveyed by state or federal biologists.

This proposal requests support to continue the Adopt-a-Lek program in Oregon through 2022. To date, 1,195 lek sites have been identified in Oregon, which comprise 809 lek complexes. On average, approximately 40% of these known lek complexes have been surveyed annually for population trend information. Lek monitoring effort has increased with the addition of volunteers through the Adopt-a-Lek program, providing ODFW with a greater understanding of the distribution of leks in Oregon. In 2021, the Adopt-a-Lek program greatly assisted ODFW during the sage-grouse lek survey season, with 1,854 individual surveys completed at 68.8% of the 1,195 known leks in the state (See [Oregon Greater Sage-Grouse Population Monitoring: 2021 Annual Report](#) (*link*) for further information regarding population survey efforts and trends during 2021). Due to the significance of sage-grouse populations to Oregon and adjoining states, high survey effort and monitoring effort continues to be necessary for providing accurate estimates of population trends.

The significance of these interstate sage-grouse populations was recognized in the range-wide conservation assessment of sage-grouse (Connelly et al. 2004). Moreover, Oregon's state strategy for sage-grouse identified a need for improved sampling within regions where only a small proportion of leks can be surveyed annually (Hagen 2011). As Oregon continues to implement its strategy for sage-grouse conservation, adequate data will be needed to monitor the success of conservation actions in the years to come.

Increased survey effort associated with the Adopt-a-Lek program has helped Oregon exceed its statewide goal of surveying 50% of leks in every PAC in the state. Support for the Adopt-a-Lek program provided by Oregon Wildlife Foundation and BLM was instrumental to this effort in 2021, and has been for many years. Oregon's goal to survey more than 50% of leks in every PAC is being maintained in 2022, with the expectation that the Adopt-a-Lek program will once again be integral to its success. By hiring a dedicated volunteer coordinator for the program, the process of implementing the program will be streamlined and the probability of exceeding the

state-wide monitoring goal improved. As in previous years, ODFW will provide training, maps, and other logistical support to the program's volunteer coordinator and the program's volunteers. Methodologies for conducting lek counts will be consistent with those in other states and will follow the protocol established by ODFW. Following completion of surveys, ODFW will incorporate data collected by Adopt-a-Lek program volunteers into the annual sage-grouse population estimate, as well as into BLM adaptive management trigger decisions.

ODFW has completed strategic planning for 2021-2025 to increase sage-grouse lek monitoring using multiple techniques, including agency and Adopt-a-Lek volunteer ground surveys, aerial infrared surveys by aircraft, and helicopter lek searches. A variety of funding sources have been identified for support of all facets of monitoring for 2021-2025. In particular, the BLM has renewed its cooperative funding agreement with ODFW to enhance sage-grouse population monitoring. Through this agreement, BLM will continue to support sage-grouse lek monitoring in Oregon by reimbursing Adopt-a-Lek travel costs in 2022. This will enable the Adopt-a-Lek program to grow and expand its lek monitoring contributions in additional areas of the state where ground surveys have been lacking. Goals for 2021-2025 also include increased volunteer recruitment, training, and deployment throughout the state.

Data collected by the Adopt-a-Lek program has been a significant addition to the statewide sage-grouse database and are used by state biologists and federal agencies to manage this sagebrush obligate species. It is anticipated that the project will have at least three types of benefits: a) increase ODFW's ability to monitor population trend and distribution of sage-grouse; b) assist our understanding of the effects of 2012 wildfires (e.g., Holloway and Long Draw) on Oregon's sage-grouse populations; and c) serve as a hands-on outreach and education tool for sage-grouse and shrub-steppe issues through participation in the program.

Oregon Wildlife Foundation will be recognized for their funding support for this program within the Annual Sage-Grouse Population Monitoring report, as well as in various presentations given regarding sage-grouse population monitoring in Oregon.

### **Budget Request Justification**

This budget request is at the same level as 2019-2021, and higher than that requested during previous years of the Adopt-a-Lek program. An increase in the number of volunteers involved in the program has helped the program continue its success, but the additional volunteers has led to an increase in the time required by the Volunteer Coordinator to fully coordinate the program. During 2017, funding for the Volunteer Coordinator was budgeted for 412 hours of work, but the actual workload involved in managing the program was estimated at approximately 600 hours. During 2018-21, the workload was similar and is expected to remain constant in 2022. Thus, the requested funds for the 2022 Adopt-a-Lek program year will eliminate any unpaid hours of work by the Volunteer Coordinator and help the program to retain a qualified and competent employee in the position. Ultimately, the AAL Program would not be possible without a dedicated AAL Volunteer Coordinator.

## Literature Cited

BLM (Bureau of Land Management). 2015. Oregon greater sage-grouse approved resource management plan amendment. Bureau of Land Management. Portland, Oregon USA.

Connelly, J. W., S. T. Knick, M. A. Schroeder, and S. J. Stiver. 2004. Conservation Assessment of Greater Sage-grouse and Sagebrush Habitats. Western Association of Fish and Wildlife Agencies. Unpublished Report. Cheyenne, Wyoming.

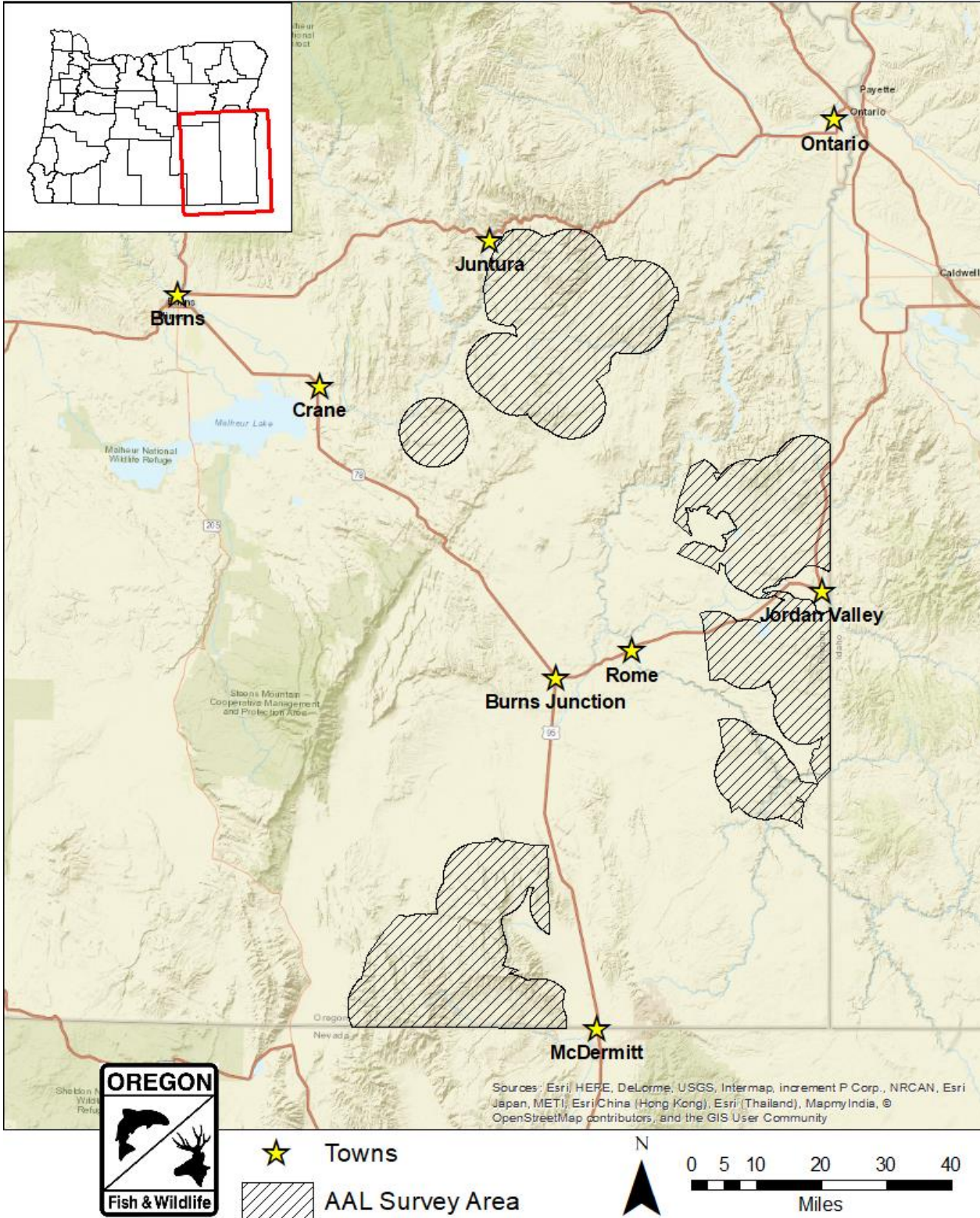
Hagen, C. A. 2011. Greater sage-grouse conservation assessment and strategy for Oregon: a plan to maintain and enhance populations and habitat. Oregon Department of Fish and Wildlife.

Hanser, S. E., and S. T. Knick. 2011. Greater sage-grouse as an umbrella species for shrubland passerine birds: a multiscale assessment. Pages 475–487 in S. T. Knick and J. W. Connelly, editors. Greater sage-grouse: ecology and conservation of a landscape species and its habitats. University of California Press, Berkeley, USA.

Rowland, M. M., M. J. Wisdom, L. H. Suring, and C. W. Meinke. 2006. Greater sage-grouse as an umbrella species for sagebrush-associated vertebrates. *Biological Conservation* 129:323–335.

SageCon [Sage-Grouse Conservation Partnership]. 2015. The Oregon Sage-Grouse Action Plan. Governor's Natural Resources Office, Salem, OR, USA.

# Adopt-a-Lek Program Survey Area





# United States Department of the Interior



## BUREAU OF LAND MANAGEMENT

Oregon State Office  
P.O. Box 2965, Portland, Oregon 97208  
blm.gov/or

Mr. Tim Greseth  
Executive Director  
Oregon Wildlife Foundation  
P.O. Box 30406  
Portland, Oregon 97294-3406

Dear Mr. Greseth:

I am writing in support of the Oregon Department of Fish and Wildlife (ODFW) application to the Oregon Wildlife Grant Program for \$10,000 to fund the Southeast Oregon Sage-Grouse Adopt-A-Lek Volunteer Program. This program coordinates volunteers to count sage-grouse displaying on leks during the spring breeding season. Lek counts provide the Bureau of Land Management (BLM) with critically important data for monitoring the adaptive management thresholds identified in the BLM's Oregon Greater Sage-Grouse Approved Resource Management Plan Amendment and the State of Oregon's Sage-Grouse Action Plan.

Estimating sage-grouse population trends from lek counts requires multiple visits to hundreds of leks spread across remote habitat. The BLM supports the lek survey effort through a Financial Assistance Agreement, providing ODFW with approximately \$120,000 per year to monitor leks both from the ground and from the air. Altogether, the BLM, ODFW, and volunteers spend about 4,000 hours monitoring 58 to 70 percent of Oregon's 1,180 known leks. This huge monitoring effort provides crucial data for the ODFW to reliably estimate sage-grouse population trends. This information is vitally important to BLM's ongoing management for sage-grouse conservation. Funding provided by the Oregon Wildlife Foundation would leverage the BLM's contribution to the ODFW Adopt-A-Lek Volunteer program.

The Adopt-A-Lek Volunteer program has proven to be a reliable, cost-effective way to obtain high quality population data for making management decisions impacting sage-grouse and local communities. The BLM supports funding this proposal.

Sincerely,

Lee B. Folliard  
Branch Chief for Biological Resources  
Division of Resources, Lands, and Minerals

cc:  
Mr. Skyler Vold  
Sage-Grouse Conservation Coordinator  
Oregon Department of Fish & Wildlife  
P.O. Box 8  
Hines, OR 97738



# United States Department of the Interior



FISH AND WILDLIFE SERVICE  
Oregon Fish and Wildlife Office  
2600 SE 98<sup>th</sup> Avenue, Suite 100  
Portland, Oregon 97266  
Phone: (503) 231-6179 FAX: (503) 231-6195

Reply To: 8181.0515  
File Name: AAL LOS 2021.docx  
TS: 21-17

Project Committee  
Oregon Wildlife Foundation  
901 SE Oak St, Suite 103  
Portland, OR 97214

October 14, 2021

Subject: Oregon Adopt-A-Lek Volunteer Program

Dear Committee Members,

We are writing to express our support of the Oregon Adopt-a-lek volunteer program grant proposal being submitted by the Oregon Department of Fish and Wildlife (ODFW). As outlined in the proposal, many agencies and organizations continue to implement the Oregon Greater Sage-Grouse Action Plan for sage-grouse conservation, now entering its seventh year. Since the beginning, ODFW has exceeded its goal of monitoring at least 50% of the known sage-grouse leks in the state annually. This landscape-scale project requires the coordination of a large group of volunteers, agency staff, conservation stakeholders, and landowners.

Continuation of the Adopt-a-Lek program will assist in our ability to understand the effects our conservation efforts are having on the greater sage-grouse by monitoring the changes in population abundance. Additionally, monitoring greater sage-grouse population trends provides essential information on habitat conditions, as well as information on other sage-steppe obligate species. The efforts described in this proposal are of high value, will be immediately beneficial in the short-term, and support the long-term goal of keeping greater sage-grouse from needing the protection of the Endangered Species Act. We look forward co-funding this program again this year, and have encouraged the Oregon Department of Fish and Wildlife to apply for future U.S. Fish and Wildlife Service funding as well.

**INTERIOR REGION 9  
COLUMBIA-PACIFIC NORTHWEST**

---

IDAHO, MONTANA\*, OREGON\*, WASHINGTON

\*PARTIAL

Thank you very much for your consideration of this proposal, and for the opportunity to be a part of this important work. If you have any questions, please contact me or Jeff Everett on my staff at 503-231-6952.

Sincerely,

Paul Henson, Ph.D.  
State Supervisor











