

July 20, 2021

Oregon Wildlife Heritage Foundation
901 SE Oak Street, Suite 103
Portland, OR 97214-1350
nicole@myowf.org

Project Completion Report: Lewis Creek Watershed Health, OrW Grant # 20-20

In Lewis Creek, habitat types consist primarily of large stands of bitterbrush, and native bunchgrasses that provide excellent forage for wintering deer and elk. These key habitats are undergoing landscape changes resulting from western juniper encroachment, leading to a loss of the shrub and forb components.

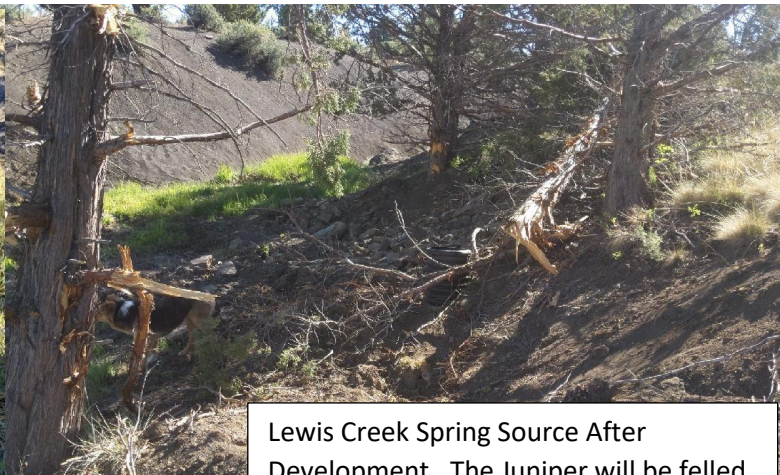
Juniper Woodlands pose a critical threat to watershed and ecosystem health wherever they occur, especially on shallower soils. Once juniper becomes dominant, only its removal benefits the watershed (Bedell, et.al. 2003). An ecosystem containing juniper functions differently than one without juniper. Particularly noticeable are the changes in the water and nutrient cycles. As western juniper increases in number and size, a larger proportion of the water falling on a site is affected by canopy interception and the overland flow of water. Ranchers have also witnessed springs drying up as junipers became abundant in a watershed.

Overstocked forested headwaters, in this case overstocked Juniper, arid climate zone, and climate change, are affecting the amount of good quality upland watering sources. Well distributed, high quality water available in upland habitats can assist in a more even use of rangelands.

The goal of the proposed project is to protect, enhance, and restore range conditions that will provide key winter habitat for mule deer and elk, and increased water quantity for Lewis Creek. In order to increase water quantity to Lewis Creek, and water availability to the spring source proposed for development, we are planning to use landowner cost share and funding from the Oregon Watershed Enhancement Board, to remove 170 acres of Juniper surrounding a Spring Source, and on aspects with flow into Lewis Creek. To provide reliable, high quality, off-channel water for livestock and wildlife, to better utilize uplands and draw away from Lewis Creek, we were able to use Oregon Wildlife Heritage Foundation's support to develop one upland spring source and pipe into 2, 1500 gallon water troughs. We have contracted the Juniper removal, and the contractor is currently cutting and piling.



Lewis Creek Spring Source Before development



Lewis Creek Spring Source After Development. The Juniper will be felled surrounding the source, providing protection



Area for water trough placement



2, 1500 gallon tire water troughs.

Invoice

Lil Buddy Construction LLC
61995 Dog Patch Ln
John Day, OR 97845
CCB#193573

Date	Invoice #
7/10/2021	331

Bill To
South Fork John Day River Watershed 150 E. Main, Ste. 102 John Day, OR 97845

P.O. No.	Project	Terms
	Airport Spring	Net 30

Quantity	Description	Rate	Amount
1	Airport Spring - Double R Ranch	5,000.00	5,000.00
Thank you for your business!		Total	\$5,000.00
Phone #	541-620-4348	E-mail	lilbuddyconst@ortelco.net